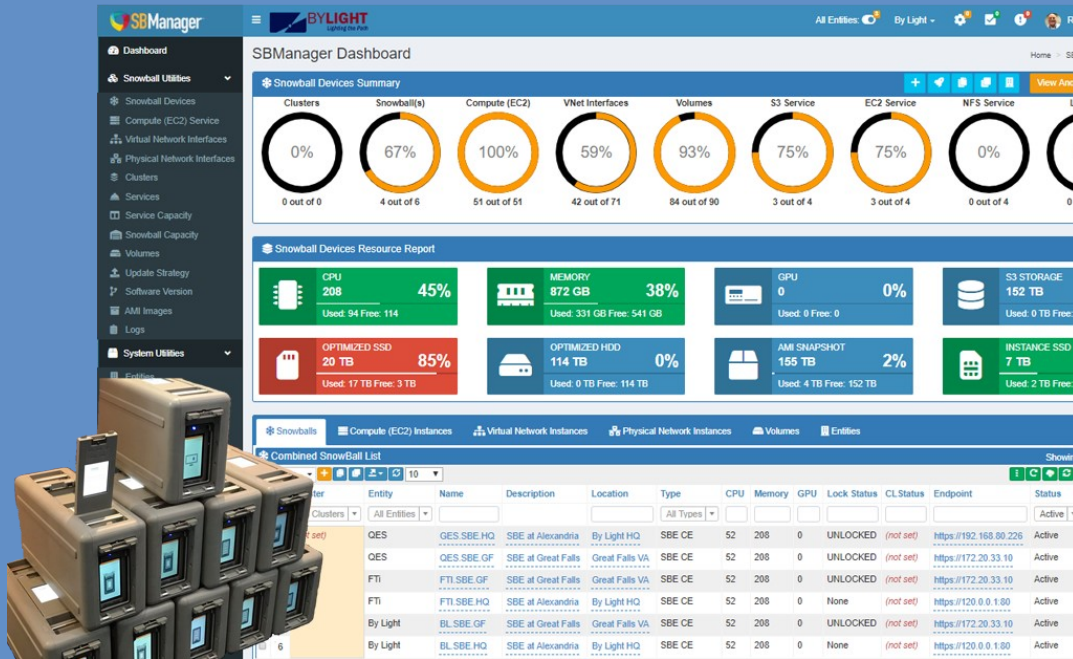




SBManager™ is tailored for the enterprise, technology benefits a few or thousands of deployed Snowball devices and supports single or bulk actions across multiple Snowballs simultaneously. Our software enables the ability to remote manage and bulk configure Snowball devices that are geographically diverse, or it will work on a localized network disconnected from the Internet. Enterprise ready, our user-friendly interface makes it possible for any user to easily access and manage Snowball devices without the need to deploy advanced IT professionals in the field.



Inside SBManager™ we can apply all commands in the AWS Boto library at the click of a button to a fleet of local or remote Snowball(s). Our software includes Role Based Access Control and user access management, this adds control over who can access our software for added security among segregated business teams. Our dashboard displays of all Snowball(s) or Individual Snowball data allows easy management of your fleet of Snowball devices by operations groups.

Try SBManager FREE for one week in aws marketplace



Looking for a standard hardware platform that is ruggedized, secure, powerful and ATO'd?

Waiting for hardware procurement and configuration?

Deliver a complete solution, SBManager™ simplifies application integration and features like Clone or Copy Snowball simplifying integration allowing software vendors to utilize the Snowball platform easily as a total edge computing solution. We can automate complete installation / configuration of the Snowball devices, initiate installation scripts of your software and SBManager microservices are available as API for integration with any custom application. We can even support your custom software update strategies.

Features at a Glance

Support All Snowball Device Types - Storage & Compute Optimized	✓	Remote Snowball Device Management	✓
Automate Unlock/Startup/Stop/Configuration Management	✓	Data Migration Automation	✓
Autodiscover Snowball Devices on a Network	✓	Resource/Capacity Reporting	✓
Drag & Drop Data Management - Including S3	✓	User Role & Entity Management	✓
Manage Multiple Snowball Devices	✓	Snowball Device Software Release Management	✓
EC2 Discovery	✓	IP Address Management & Control	✓
EC2 Management -Single or Bulk	✓	Virtual Network Interface (VNetIF) Management	✓
Monitor - Devices & Access Logs	✓	Local & Remote Snowball Device Reboot	✓
Copy a Snowball Device	✓	Supports Command Bulk Operations	✓
Clone One or Thousands of Snowball Devices	✓	Cluster Management	✓
Bulk Configuration of Snowball Devices	✓	Emulate All Boto Commands	✓
Service Capacity Management	✓	Email Support	✓
Volume Reporting & Control	✓		

Please contact: info@sbmanager.com

www.quantumedgeservices.com