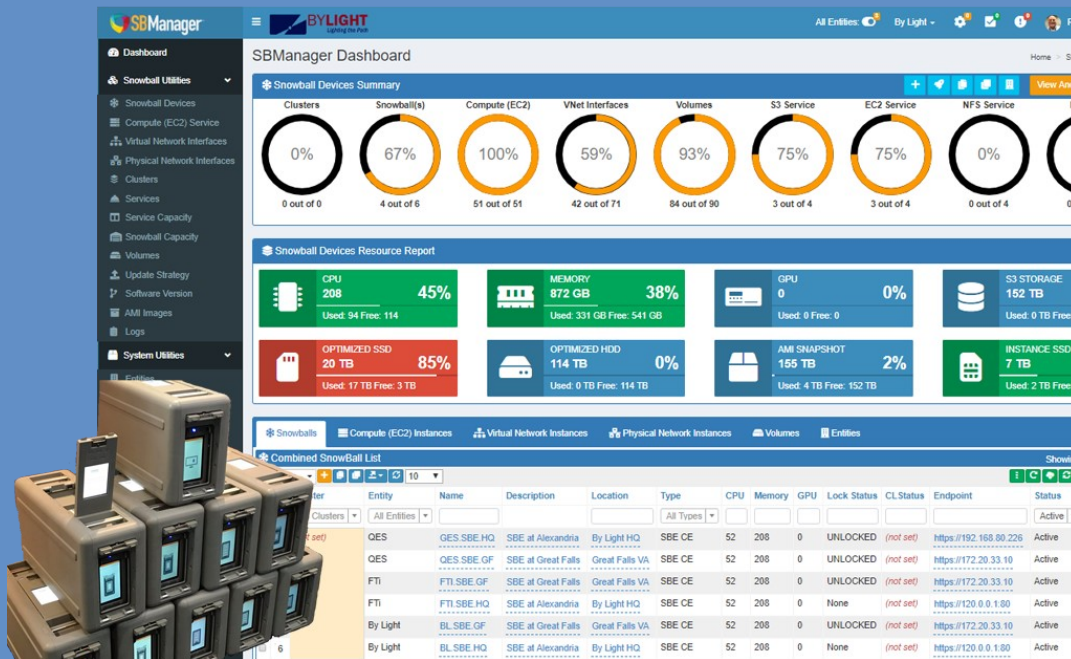




SBManager™ is tailored for the enterprise, technology benefits a few or thousands of deployed Snowball devices and supports single or bulk actions across multiple Snowballs simultaneously. Our software enables the ability to remote manage and bulk configure Snowball devices that are geographically diverse, or it will work on a localized network disconnected from the Internet. Enterprise ready, our user-friendly interface makes it possible for any user to easily access and manage Snowball devices without the need to deploy advanced IT professionals in the field.



Inside SBManager™ we can apply all commands in the AWS Boto library at the click of a button to a fleet of local or remote Snowball(s). Our software includes Role Based Access Control and user access management, this adds control over who can access our software for added security among segregated business teams. Our dashboard displays of all Snowball(s) or Individual Snowball data allows easy management of your fleet of Snowball devices by operations groups.

Try SBManager FREE for one week in aws marketplace

SBManager™ provides an impressive enterprise set of features and tools that enables simplified data migration, edge computing and deployable hardware integrated solutions. Nothing compares to SBManager and new features are continuously being added.

Features at a Glance

| Enterprise Software Features | SBManager | AWS OpsHub |
|--|-----------|------------|
| Snowball Software Integration for ISV's | ✓ | ✗ |
| Remote Management of Multiple Devices | ✓ | ✗ |
| Bulk Management of Devices | ✓ | ✗ |
| Network Discover Devices | ✓ | ✗ |
| Clone Snowball device(s) | ✓ | ✗ |
| Copy Snowball Device(s) | ✓ | ✗ |
| Detailed Dashboard Displays: | | |
| <i>Combined Snowball Devices Dashboard</i> | ✓ | ✗ |
| <i>Individual Snowball Device Dashboard</i> | ✓ | ✗ |
| File and Object Management - Data Migration: | | |
| <i>Attach Multiple Network Accessible Locations</i> | ✓ | ✗ |
| <i>Validation of Transferred Data</i> | ✓ | ✗ |
| <i>Switch Out Snowball Devices During Migration</i> | ✓ | ✗ |
| <i>Attach Cloud Location</i> | ✓ | ✗ |
| <i>Attach FTP Locations</i> | ✓ | ✗ |
| <i>Snowball Log Access & Management</i> | ✓ | ✗ |
| Drag & Drop File & Object Management: | | |
| <i>Cut/Copy/Duplicate Files</i> | ✓ | ✗ |
| <i>Preview / Rename Files</i> | ✓ | ✗ |
| <i>Zip / Unzip Files</i> | ✓ | ✗ |
| <i>Open / Download Files</i> | ✓ | ✗ |
| <i>Upload - Drag & Drop or Select Files or Folders</i> | ✓ | ✗ |
| Snowball Commands Control: | | |
| <i>Entity and User Management</i> | ✓ | ✗ |
| <i>Devices Task Tracking and Control</i> | ✓ | ✗ |
| <i>Snowball Command Tasks for Detailed Analysis</i> | ✓ | ✗ |
| <i>Service Capacity Management</i> | ✓ | ✗ |

| Basic Features | SBManager | AWS OpsHub |
|---|-----------|------------|
| Unlock Snowball Device | ✓ | ✓ |
| Unlock Multiple Snowball Devices | ✓ | ✗ |
| Reboot Snowball Devices | ✓ | ✓ |
| Reboot Multiple Snowball Devices | ✓ | ✗ |
| Create / Manage EC2's: | | |
| <i>Launch EC2</i> | ✓ | ✓ |
| <i>Launch Multiple EC2's</i> | ✓ | ✗ |
| <i>Stop EC2</i> | ✓ | ✓ |
| <i>Stop Multiple EC2's</i> | ✓ | ✗ |
| <i>Start EC2</i> | ✓ | ✓ |
| <i>Start Multiple EC2's</i> | ✓ | ✗ |
| <i>Terminate EC2</i> | ✓ | ✓ |
| <i>Terminate Multiple EC2's</i> | ✓ | ✗ |
| <i>Create Storage Volume</i> | ✓ | ✓ |
| <i>Create Multiple Storage Volumes</i> | ✓ | ✗ |
| Elastic IP Creation & Control | ✓ | ✓ |
| Manage EC2 Cluster | ✓ | ✓ |
| <i>Auto- Discover Cluster and Unlock in Order</i> | ✓ | ✗ |
| Manage S3 Storage | ✓ | ✓ |
| Snowball Software Update | ✓ | ✓ |
| Snowball Software Update Mngt. Automation | ✓ | ✗ |

Please contact: info@sbmanager.com

www.quantumedgeservices.com