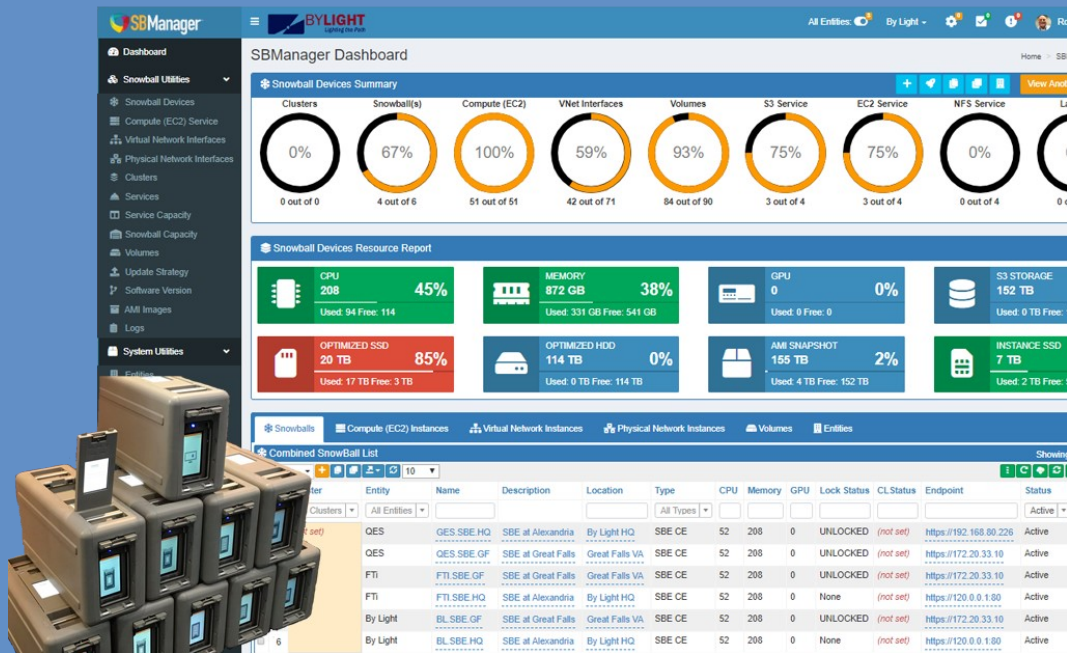




SBManager™ is tailored for the enterprise, technology benefits a few or thousands of deployed Snowball devices and supports single or bulk actions across multiple Snowballs simultaneously. Our software enables the ability to remote manage and bulk configure Snowball devices that are geographically diverse, or it will work on a localized network disconnected from the Internet. Enterprise ready, our user-friendly interface makes it possible for any user to easily access and manage Snowball devices without the need to deploy advanced IT professionals in the field.

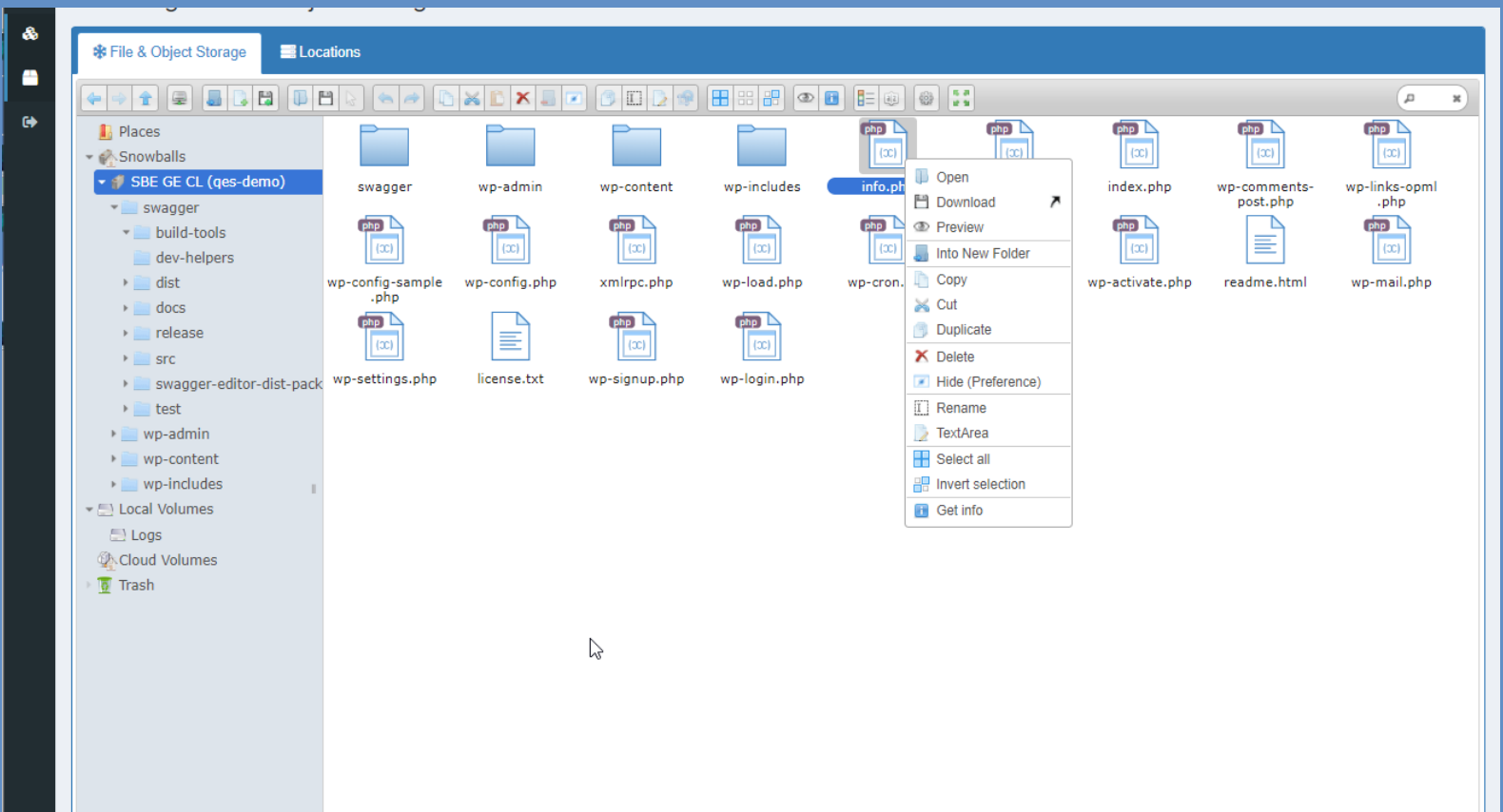


Inside SBManager™ we can apply all commands in the AWS Boto library at the click of a button to a fleet of local or remote Snowball(s). Our software includes Role Based Access Control and user access management, this adds control over who can access our software for added security among segregated business teams. Our dashboard displays of all Snowball(s) or Individual Snowball data allows easy management of your fleet of Snowball devices by operations groups.

Try SBManager FREE for one week in
 aws marketplace

Data Migration & Management

Massive data volume generation constrained by network bandwidth limitations create challenges as well as opportunities. Our drag and drop File & Object Storage Management interface allows easy migration of data into or out of the Snowball devices. This feature supports the ability to switch out Snowballs as they get full to seamlessly continue data migration of terabytes or even petabytes of data. SBManager™ has built in functionality and a full log to ensure data integrity and a complete migration. We can even attach local or remote network locations or even cloud locations for data synchronization &/or migration.



Please contact: info@sbmanager.com

www.quantumedgeservices.com