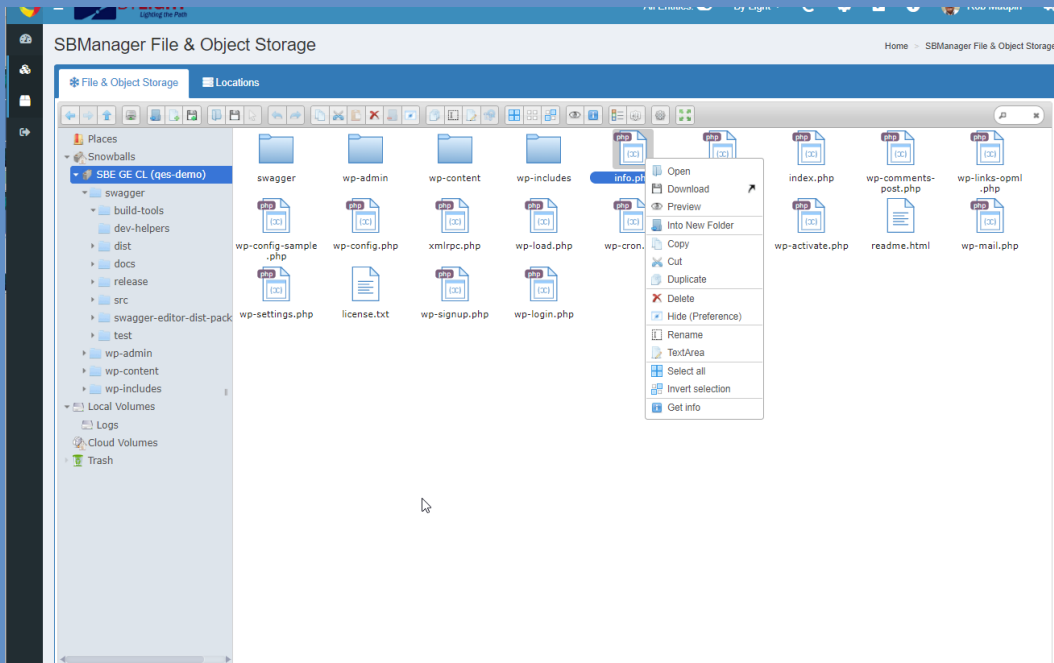




SBManager™ is tailored for the enterprise, technology benefits a few or thousands of deployed Snow devices and supports single or bulk actions across multiple Snow devices simultaneously. Our software enables the ability to remote manage and bulk configure Snow devices that are geographically diverse, or it will work on a localized network disconnected from the Internet. Enterprise ready, our user-friendly interface makes it possible for any user to easily access and manage Snow devices without the need to deploy advanced IT professionals in the field.

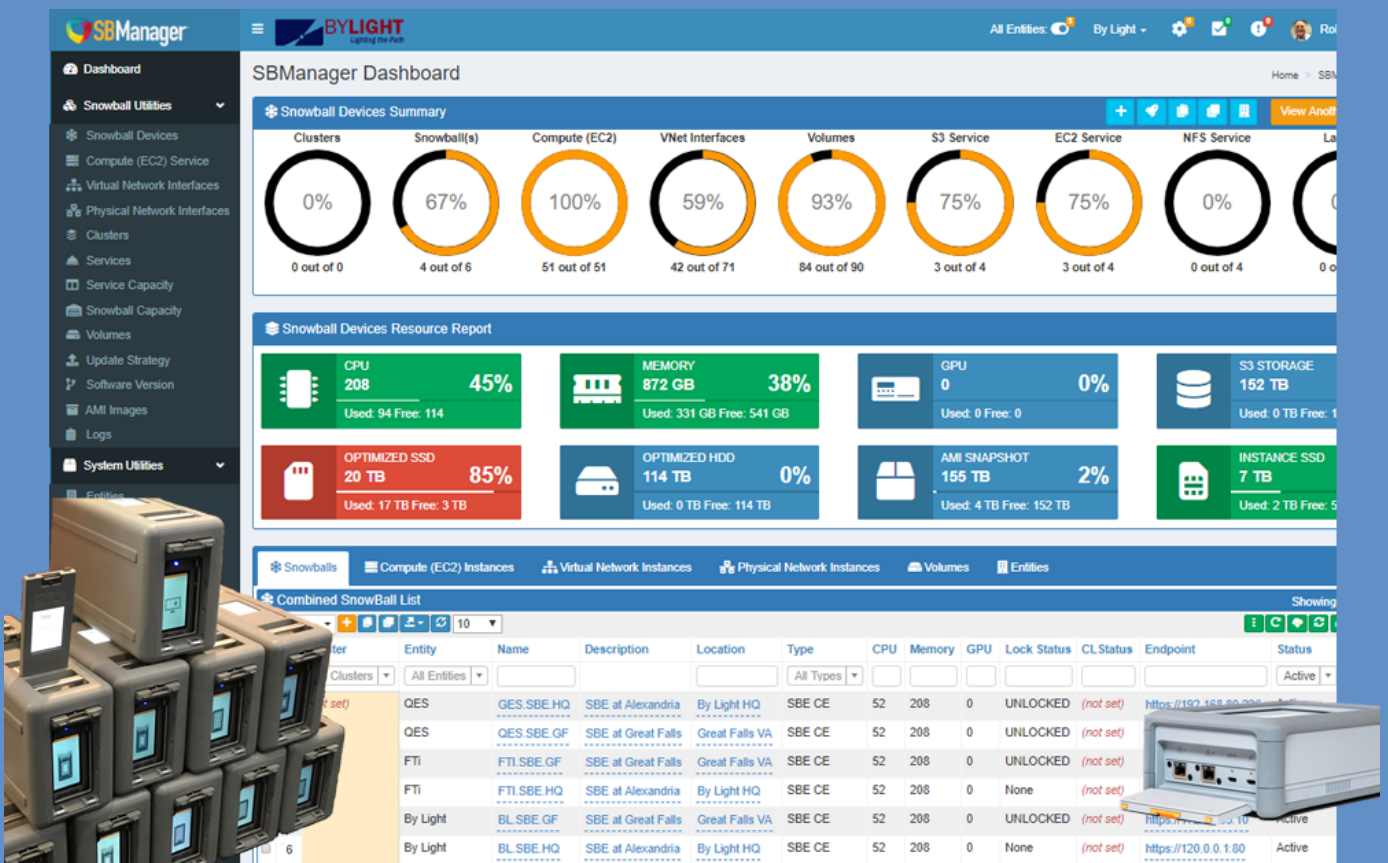


Inside SBManager™ we can apply all commands in the AWS Boto library at the click of a button to a fleet of local or remote Snow device(s). Our software includes Role Based Access Control and user access management, this adds control over who can access our software for added security among segregated business teams. Our dashboard displays of all Snow device(s) or Individual Snow device data allowing easy management of your fleet of Snow devices by operations groups.

Try SBManager FREE for one week in
 aws marketplace

Data Migration & Management

Massive data volume generation constrained by network bandwidth limitations create challenges as well as opportunities. Our drag and drop File & Object Storage Management interface allows easy migration of data into or out of the Snow devices. This feature supports the ability to switch out Snow devices as they get full to seamlessly continue data migration of terabytes or even petabytes of data. SBManager™ has built in functionality and a full log to ensure data integrity and a complete migration. We can even attach local or remote network locations or even cloud locations for data synchronization &/or migration.



The screenshot displays the SBManager dashboard with the following sections:

- Snowball Devices Summary:** A row of progress indicators for Clusters (0%), Snowball(s) (67%), Compute (EC2) (100%), VNet Interfaces (59%), Volumes (93%), S3 Service (75%), EC2 Service (75%), and NFS Service (0%).
- Snowball Devices Resource Report:** A grid of resource usage metrics:
 - CPU: 208 (45% used, 94 Free, 114)
 - MEMORY: 872 GB (38% used, 331 GB Free, 541 GB)
 - GPU: 0 (0% used, 0 Free, 0)
 - S3 STORAGE: 152 TB (Used: 0 TB Free: 1)
 - OPTIMIZED SSD: 20 TB (85% used, 17 TB Free, 3 TB)
 - OPTIMIZED HDD: 114 TB (0% used, 0 TB Free, 114 TB)
 - AMI SNAPSHOT: 155 TB (2% used, 4 TB Free, 152 TB)
 - INSTANCE SSD: 7 TB (Used: 2 TB Free: 5)
- Combined SnowBall List:** A table listing device configurations.

Cluster	Entity	Name	Description	Location	Type	CPU	Memory	GPU	Lock Status	CLStatus	Endpoint	Status
QES	GES.SBE.HQ	SBE at Alexandria	By Light HQ	SBE CE	52	208	0	UNLOCKED	(not set)	https://192.168.80.200	Active	
QES	QES.SBE.GF	SBE at Great Falls	Great Falls VA	SBE CE	52	208	0	UNLOCKED	(not set)	https://192.168.80.200	Active	
FTI	FTI.SBE.GF	SBE at Great Falls	Great Falls VA	SBE CE	52	208	0	UNLOCKED	(not set)	https://192.168.80.200	Active	
FTI	FTI.SBE.HQ	SBE at Alexandria	By Light HQ	SBE CE	52	208	0	None	(not set)	https://192.168.80.200	Active	
By Light	BL.SBE.GF	SBE at Great Falls	Great Falls VA	SBE CE	52	208	0	UNLOCKED	(not set)	https://192.168.80.200	Active	
By Light	BL.SBE.HQ	SBE at Alexandria	By Light HQ	SBE CE	52	208	0	None	(not set)	https://120.0.0.1:80	Active	

Please contact: info@sbmanager.com
www.quantumedgeservices.com